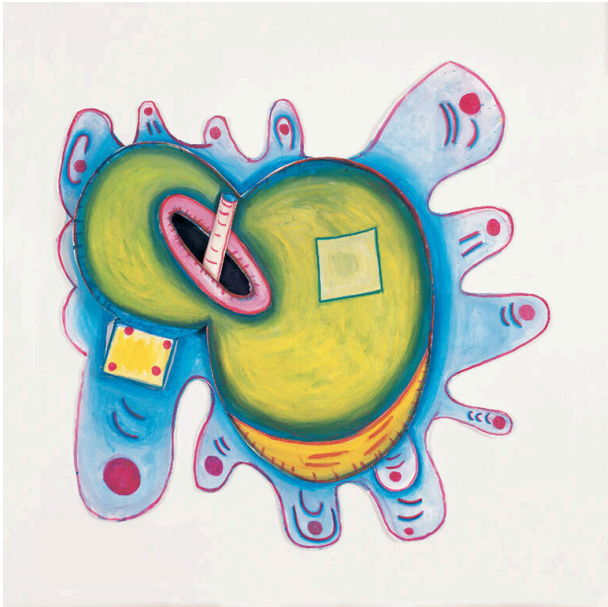


Basic Detail Report



Study for Capri

Date

2003

Primary Maker

Elizabeth Murray

Medium

gouache, watercolor and watercolor pen on paper (Cut-out; reads as a relief)

Description

An amorphous shape of green with a black hole containing a projecting white and red striped column, all

surrounded by blue lobes with red dots.

Dimensions

Image: 28 1/2 × 28 1/2 × 3 inches (72.4 × 72.4 × 7.6 cm) Framed: 30 × 30 × 2 inches (76.2 × 76.2 × 5.1 cm)