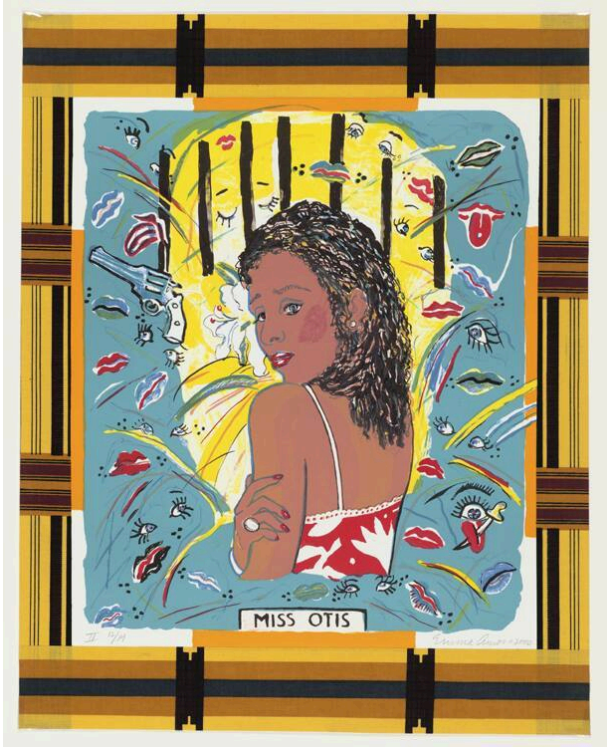


# Basic Detail Report

---



## Miss Otis

**Date**

2002

**Primary Maker**

Emma Amos

**Medium**

Color offset lithograph with collaged fabric border

**Description**

A woman in a spaghetti strap red and white outfit is shown in three quarters profile with her back turned and her head turning over her shoulder. The background around the figure is yellow with black bars above her head and surrounded by blue with various objects and symbols (eyes, guns, lips, knife). Under the figure is the name

“Miss Otis” and the central image is surrounded by a patterned fabric.

## Dimensions

Image: 26 1/8 × 20 3/4 inches (66.4 × 52.7 cm) Sheet: 26 1/8 × 20 3/4 inches (66.4 × 52.7 cm) Matted: 40 × 32 inches (101.6 × 81.3 cm)