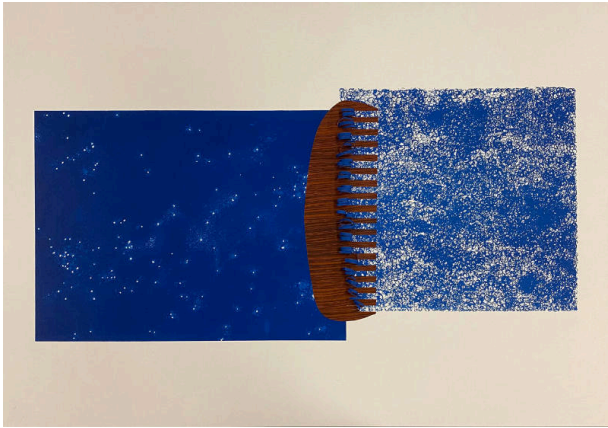


# Basic Detail Report

---



## Afro Blue Matter

### Date

2017

### Primary Maker

Sonya Clark

### Medium

Color lithograph; collage; laser cutting on Revere paper

### Description

A blue rectangle on the left with constellation-like dots is aligned with a blue square on the right made up of hair-like curls. The blue sections are connected in the middle with a brown comb-like symbol. Between the teeth of the comb, blue curls project from the print.

### Dimensions

Sheet: 22 1/8 × 30 × 1 1/2 inches (56.2 × 76.2 × 3.8 cm) Matted: 32 × 40 inches (81.3 × 101.6 cm)

Framed: 33 × 41 15/16 × 1 7/8 inches (83.8 × 106.5 × 4.8 cm)