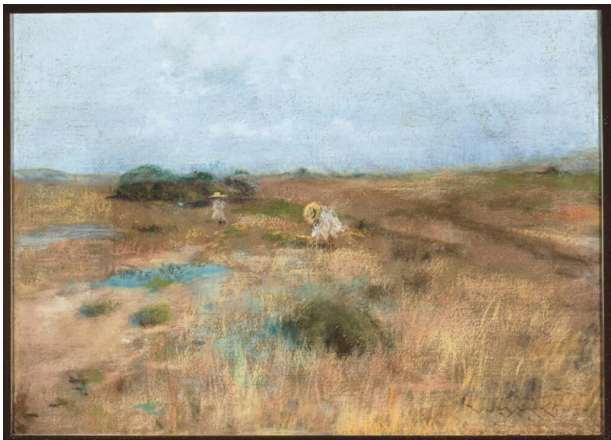


Basic Detail Report



October

Date

c. 1902

Primary Maker

William Merritt Chase

Medium

Pastel on primed, lightweight canvas on Masonite

Description

Landscape with two girls in white dresses and yellow hats in a field on a clear day.

Dimensions

Canvas: 16 7/8 × 23 3/16 inches (42.9 × 58.9 cm) Framed: 22 3/4 × 29 inches (57.8 × 73.7 cm)