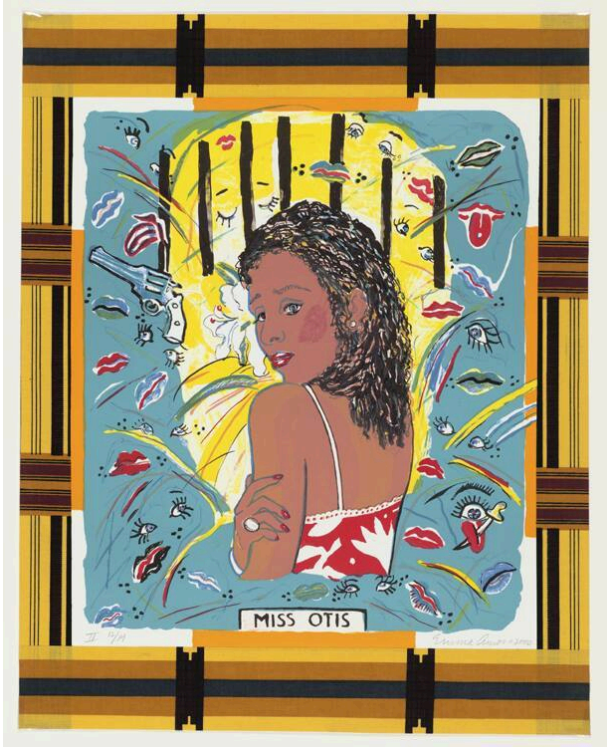


Basic Detail Report



Miss Otis

Date

2002

Primary Maker

Emma Amos

Medium

Color offset lithograph with collaged fabric border

Description

A woman in a spaghetti strap red and white outfit is shown in three quarters profile with her back turned and her head turning over her shoulder. The background around the figure is yellow with black bars above her head and surrounded by blue with various objects and symbols (eyes, guns, lips, knife). Under the figure is the name

“Miss Otis” and the central image is surrounded by a patterned fabric.

Dimensions

Image: 26 1/8 × 20 3/4 inches (66.4 × 52.7 cm) Sheet: 26 1/8 × 20 3/4 inches (66.4 × 52.7 cm) Matted: 40 × 32 inches (101.6 × 81.3 cm)