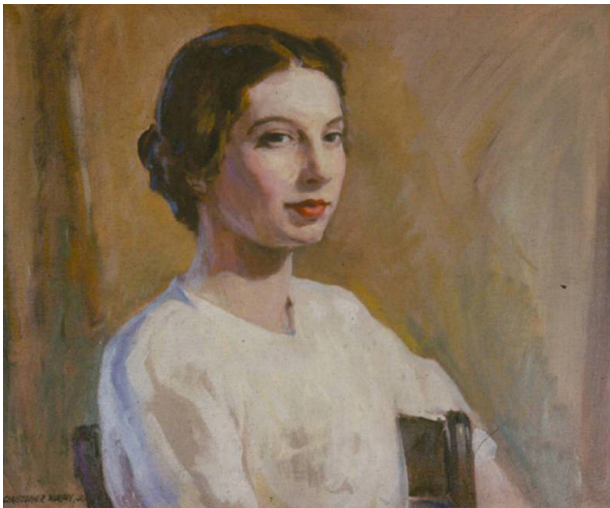


Basic Detail Report



Portrait of the Artist's Sister, Margaret

Date

c. 1930 - 1940

Primary Maker

Christopher A. D. Murphy

Medium

Oil on canvas

Description

A painting of a young woman in three-quarters view seated with her arm draped over the back rail of a chair. She has brown hair in a bun, fair skin, pink lips and is wearing a white garment.

Dimensions

Framed: 20 1/8 × 24 1/8 inches (51.1 × 61.3 cm)